



Manage your devices from anywhere, anytime with Radarsign Cloud™.

Radarsign Cloud™ is a secure, cellular modem, remote cloud management system. It provides the central management of your network of devices anytime, anywhere including sign operation settings, alerts, data access, and data collection from any internet connected device.

Key Features of the Radarsign Cloud™ Safety Management System

Convenient:

- Authorized users have instant access to the network using any of their internet-ready devices. There is no software to download. All you need is an internet connection to log onto cloud.radarsign.com. Simply enter your username and password to access your devices.
- Provides push delivery of software, firmware, and code updates and upgrades directly to the radar speed sign
- View your entire network of radar speed signs and other 3rd party devices, like school zone beacons, with GPS mapping
- Update device settings from GPS map zoom-in feature
- Partial day data upload on-demand

Cost and Resource Effective:

- Eliminates the need for resources to be deployed to the field to manage individual signs, which saves time, fuel, and training costs
- Reduces the number of times employees must travel to a device for any reason
- Ease of operation from web page reduces the re-training time due to employee turnover
- Annual access fee is lowest in the traffic safety industry
- Allows up to 200 users with either full or limited access. The three user access levels are:
- Administrator: Has full access to everything including add or remove a user, add signs, or run reports
- Device Manager: Same as administrator except that they cannot add or remove another user
- Read Only User: Can run the standard reports or customize their own reports

Centrally Managed:

- Fully accessible by most popular web browsers on both desktop and mobile devices
- Reduces time and complexity of operating and managing your radar speed signs, school zone beacons, and other devices

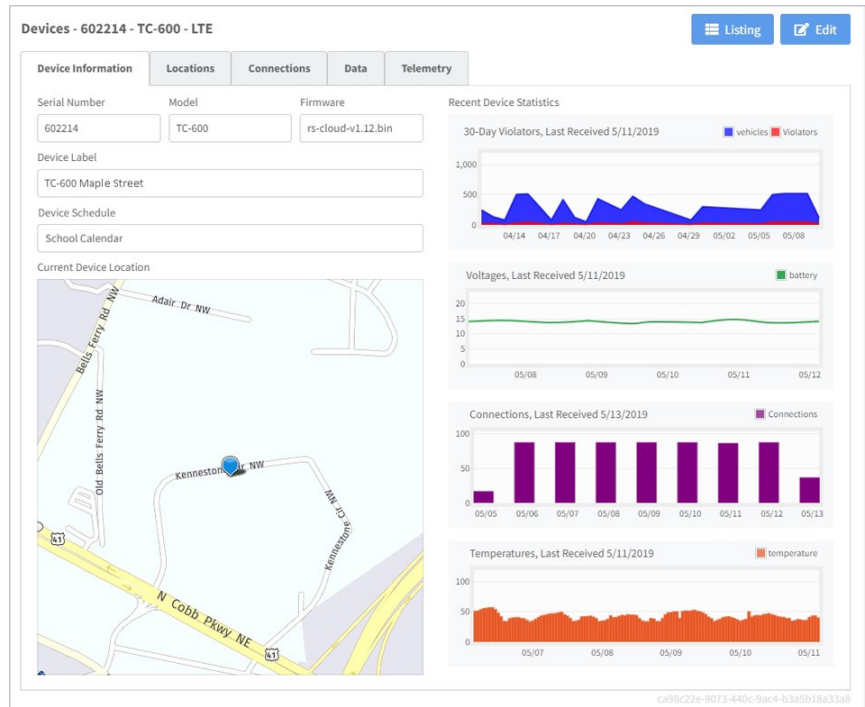
Operation of Device:

- Radar speed sign will connect to Cloud upon powering up
- Check-in feature connects with Cloud every 15 minutes (96x/day) for any updates
- IT independent, no special work required by network administrators; System works outside customer network
- Cloud database is managed 100% by Radarsign; No customer input required



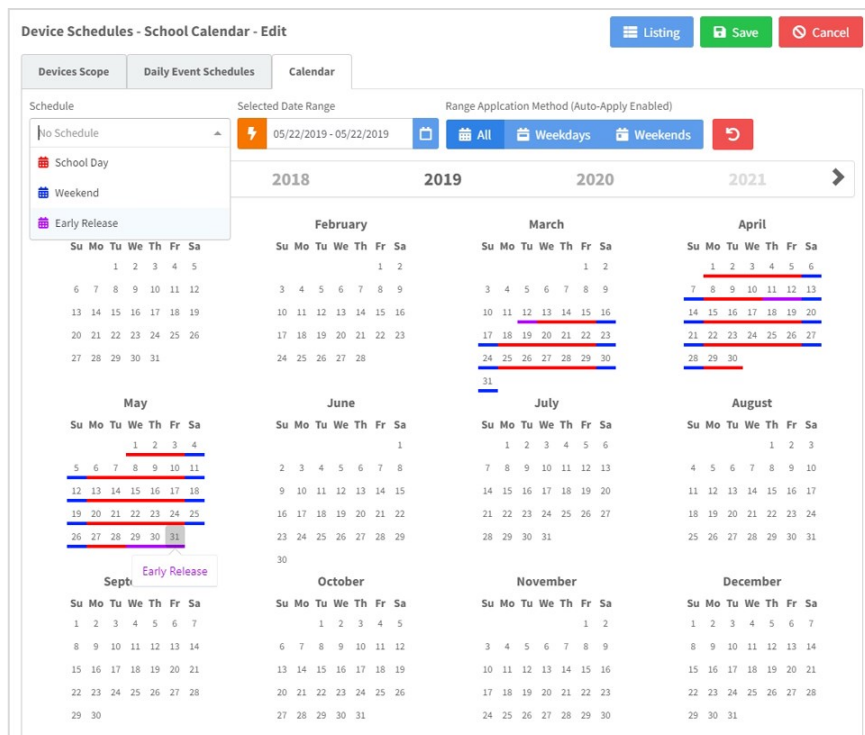
User Friendly:

- Hover over device icon to see current operating settings and sign status
- Secondary access to Radarsign brand speed signs is via Wi-Fi, using any smart phone, tablet, or laptop, from up to 300 feet from the sign. No special app or internet access is required.



Easy Scheduling:

- Advanced scheduling: Continuous multi-year schedule can be pre-programmed
- Multiple devices can share the same schedule



System Alerts:

- Provides daily diagnosis of device health and battery levels. It also notifies system if power drops too low or device fails to communicate with the host.
- Alerts can be sent via email and/or text messages to the preset administrator when triggered
- Receive alerts for:
 - Low battery level - Warns administrators before the power level reaches a critical level
 - Device off-line
 - Location change - Alerts that the sign has been moved
 - Non-normal events - Alerts when there is abnormal traffic flow (e.g.: congestion or an accident)
 - Tampering

The screenshot displays a 'Device Alerts' interface. It is divided into two main sections: 'Active' and 'Cleared'.

Active Alerts:

- Tampering Detected - TC-600 Maple St.** (May 2, 2019): Device TC-600 Maple St. sensed possible tampering or damage due to physical impacts or vibrations.
- Low Battery - TC-600 Maple St.** (May 1, 2019): Device TC-600 Maple St. experienced a battery voltage level in the past 24 hours which could affect operational functions.

Cleared Alerts:

Created Date	Cleared Date	Title/Device	Content
May 12, 2019	May 22, 2019 John Smith	Location Change TC-600 Maple St.	Device TC-400 Out Front reported a new location or position
May 7, 2019	May 22, 2019 Robert Marker	Offline TC-600 Maple St.	Device TC-400 Out Front failed to connect with Radarsign Cloud in 24 hours
May 7, 2019	May 22, 2019 Jim Baker	Disrupted Communications TC-600 Maple St.	Device TC-400 Out Front failed to successfully complete a communication cycle with Radarsign Cloud in 24 hours

Fast and Secure:

- Utilizing cloud-based architecture, Radarsign Cloud™ provides secure and reliable communication between the system server and network controller

Automated Data Collection:

- Traffic data uploaded to Cloud server every night
- Data management greatly simplified using easy web-based interface to view data in multiple formats including charts, tables, and graphs
- In case of interruption of Radarsign Cloud™ service, schedule of operation is locally stored on the device for 30 days
- Metrics of temperature and battery usage are recorded daily, for each 15 minutes of the day
- Keeps traffic data for each sign location so even if the sign is moved to another location, the traffic data for each location is available
- Stealth mode: Display on-off feature allows traffic data collection to continue even when the display is off and compare to when the sign is on to measure the impact that the radar speed sign has on driving patterns
- If Cloud communication is interrupted, traffic data remains intact in the sign for one year, so 'one-off' uploads for individual days, or groups of days, can be done by administrator

Views of Traffic Data (charts, graphs, tables) *

- Speeds by week, day, hour, 1/2 hour, or 15 minutes
- Compare one time period with another
- Data can be exported, printed, or saved as table, chart, or graph
- Vehicle counts by week, day, hour, 1/2 hour, or 15 minutes
- Average speed data, fastest speed data, 50th and 85th percentile speeds
- # of vehicles travelling more than 5 mph over speed limit, more than 10 mph over, and more than 15 mph over
- Custom reports: great flexibility in allowing you 'create your own' view of the data

*Traffic data can be also be downloaded to your PC or laptop for use with our **Streetsmart** software, an Excel based Macro. Streetsmart allows you to generate 35 charts and graphs to analyze traffic data and driver behavior. Historical data is retained by our host system for a full 12 months for each radar speed sign.

Technical Support

- Our technical support department is here to troubleshoot and resolve an issue with your sign remotely, avoiding anyone having to physically go to the sign, saving time and resources
- On-line tutorials for assistance

Peace of mind:

- 2-year warranty on the cellular network controller as well as the radar speed sign

Radarsign Cloud is available for use with the TC-600 and TC-1000 models.



Are you ready to save time and resources managing your radar speed sign network from anywhere, anytime?

Call us today at 678-965-4814 to get started!

www.radarsign.com